

**FLEX CONDO/WAREHOUSE UNIT
FOR SALE IN STUART, FL**

2,050 SF // \$595,000

7530-7592 SW JACK JAMES DR, STUART, FL 34997



**Christenson
Commercial
REAL ESTATE**

759 S. FEDERAL HWY • SUITE 217 • STUART, FL 34994

Derrick Christenson
Manager/Broker
Christenson Commercial Real Estate, LLC
Derricksoldit@aol.com
☎ +1.772.419.5076
☎ +1.772.201.3154

Do not miss this rare Flex Condo/Warehouse unit for sale in Martin County, FL with custom epoxy floors and more.

Call today for more information.

THE OFFERING

Flex Condo/Warehouse located next to I-95 and the Florida Turnpike for ideal access North and South. This 2,050/SF unit features solid concrete construction, fully climate controlled warehouse, custom epoxy floors, Industrial sized ceiling fans, LED lighting, handicapped accessible bathroom, 12x14 over head door and so much more.

UNIT SIZE	2,050 SF
SELLING PRICE	\$595,000
YEAR BUILT	2009
LOT SIZE	4.12AC
ZONING DESCRIPTION	LIGHT INDUSTRIAL (CONDO)
CONDO USE	FLEX
CONSTRUCTION	MASONRY
BUILDING CLASS	B

This information has been secured from sources we believe to be reliable but we make no representations or warranties, expressed or implied, as to the accuracy of the information. Buyer must verify the information and bears all risk for any inaccuracies.



FLEX CONDO/WAREHOUSE UNIT

2,050 SF // \$595,000

7530-7592 SW JACK JAMES DR, STUART, FL 34997

Christenson
Commercial
REAL ESTATE

Derrick Christenson

Manager/Broker

Christenson Commercial Real Estate, LLC

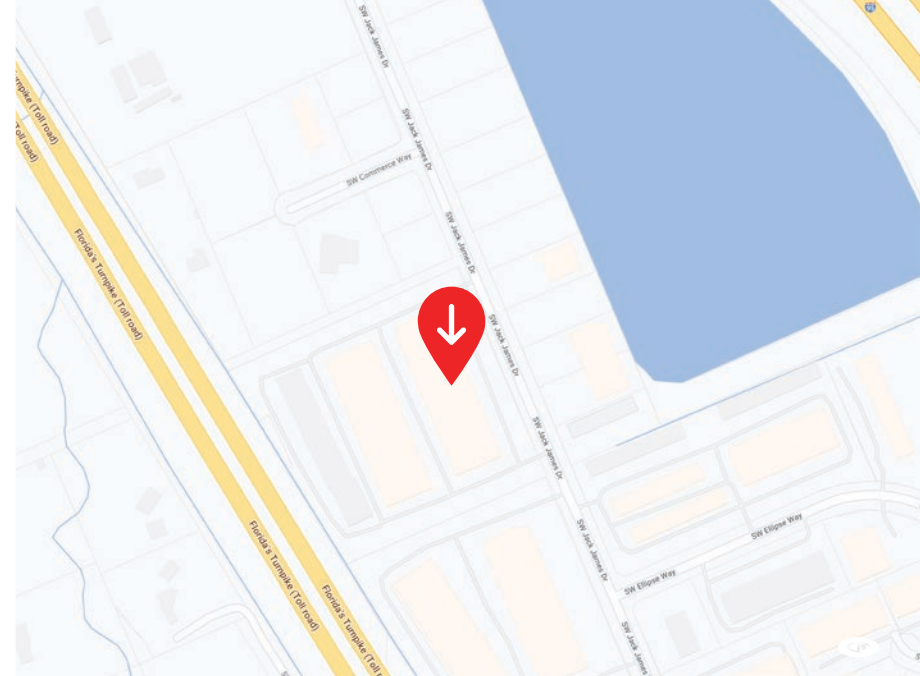
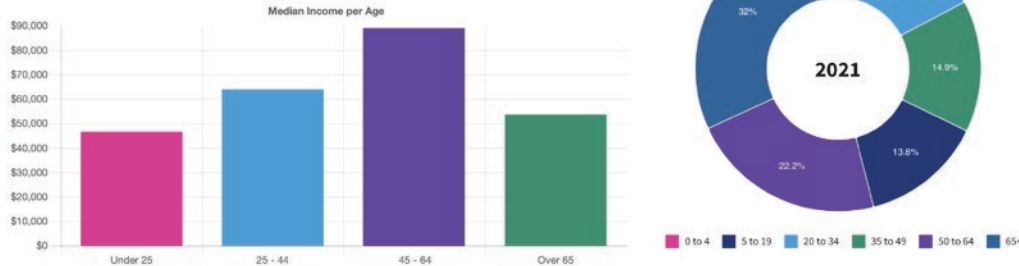
Derricksoldit@aol.com


+1.772.419.5076

+1.772.201.3154


DEMOGRAPHICS

In 2021, Martin County, FL had a population of 160k people with a median age of 52.2 and a median household income of \$61,133.






158700
Population



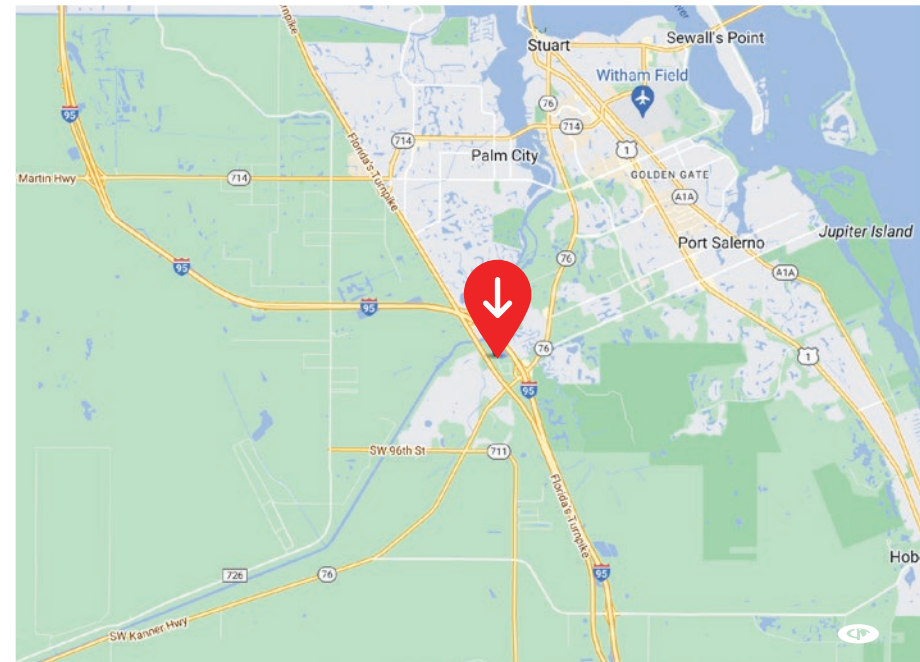
+1766
Jobs YOY Change



4%
Unemployment Rate

Sales Tax Revenue \$1.77 Mil./Year

Wealth Migration \$197 Mil./Year



FLEX CONDO/WAREHOUSE UNIT

2,050 SF // \$595,000

7530-7592 SW JACK JAMES DR, STUART, FL 34997

Christenson
Commercial
REAL ESTATE

Derrick Christenson

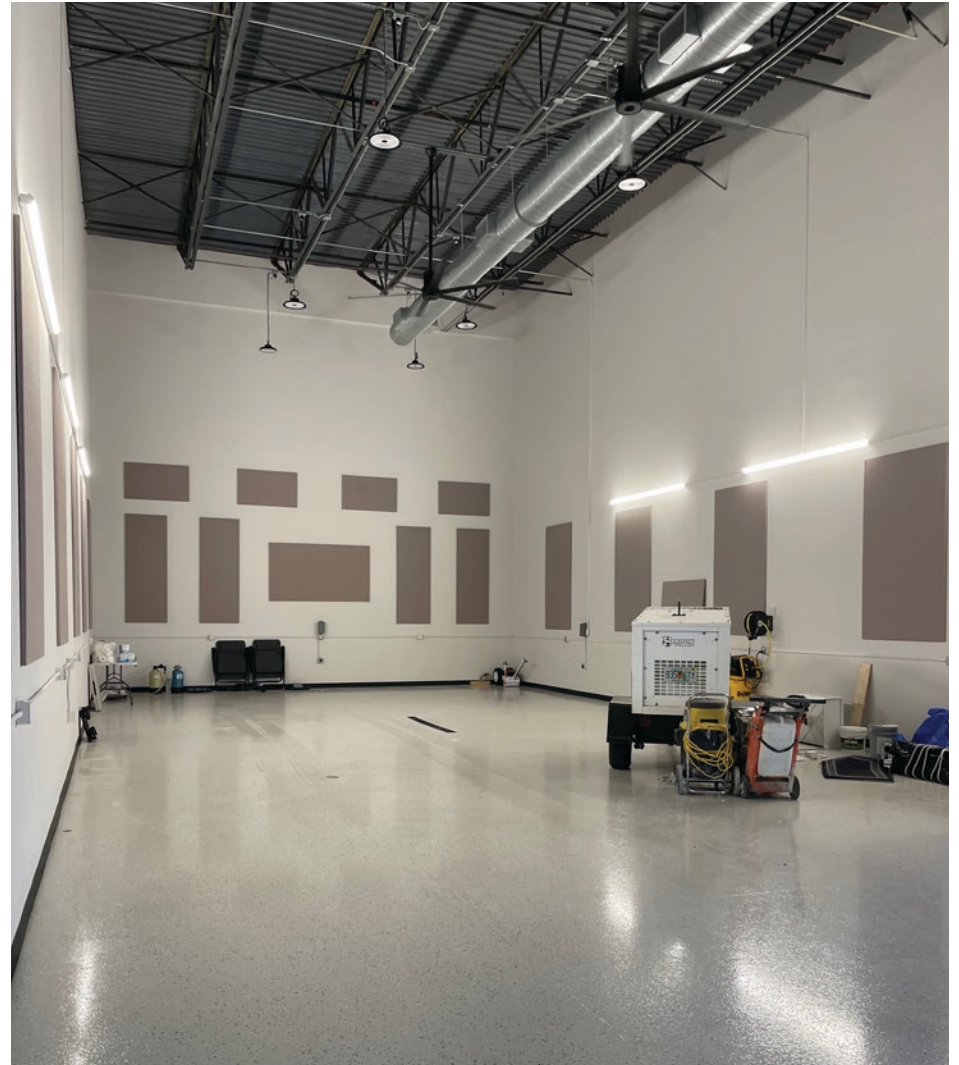
Manager/Broker

Christenson Commercial Real Estate, LLC

Derricksoldit@aol.com

+1.772.419.5076

+1.772.201.3154



FLEX CONDO/WAREHOUSE UNIT

2,050 SF // \$595,000

7530-7592 SW JACK JAMES DR, STUART, FL 34997

Christenson
Commercial
REAL ESTATE

Derrick Christenson

Manager/Broker

Christenson Commercial Real Estate, LLC

Derricksoldit@aol.com

+1.772.419.5076

+1.772.201.3154



FLEX CONDO/WAREHOUSE UNIT

2,050 SF // \$595,000

7530-7592 SW JACK JAMES DR, STUART, FL 34997

Christenson
Commercial
REAL ESTATE

Derrick Christenson

Manager/Broker

Christenson Commercial Real Estate, LLC

Derricksoldit@aol.com

+1.772.419.5076

+1.772.201.3154