



Medical Office Condos

1400 SE Goldtree Dr, Port Saint Lucie, FL 34952



Derrick Christenson

Christenson Commercial Real Estate
759 SW Federal Hwy, Stuart, FL 349942914
DerrickSoldIt@aol.com
(772) 419-5076 Ext: 1



Medical Office Condos

\$93,750 - \$143,325

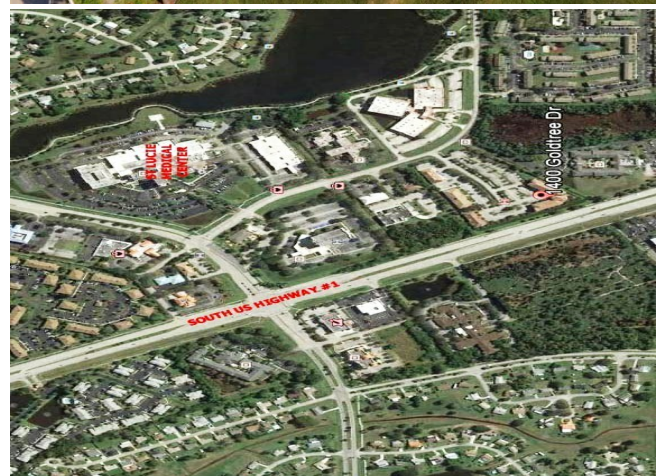
Hillmoor Professional Center office condos for sale. Five Class "A" Medical Office Condos. One is built out and the other five are "Grey Shell" condition ready for your specific office build out.

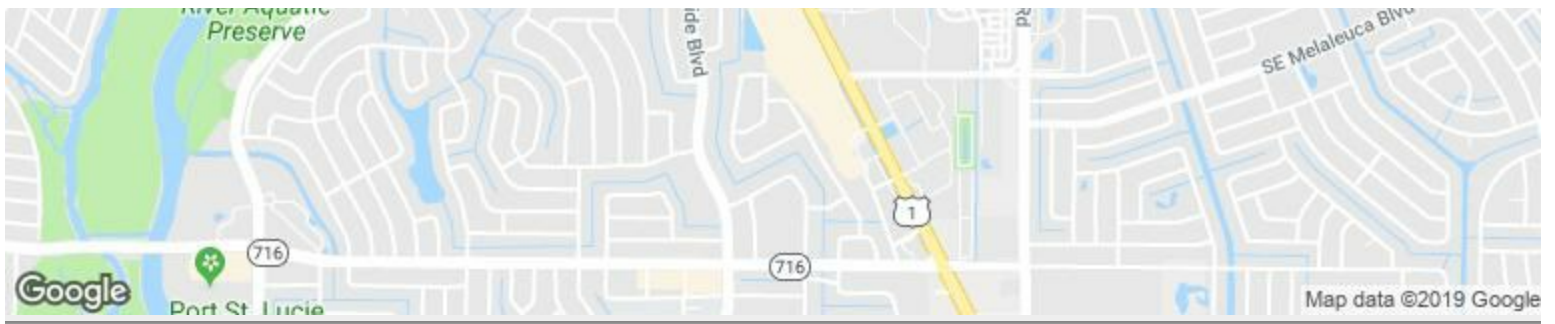
This project is strategically located in the heart of Port St. Lucie's medical hub. Located just off US1 and next to St. Lucie Medical Center.

For more information visit:

<https://www.loopnet.com/Listing/1400-SE-Goldtree-Dr-Port-Saint-Lucie-FL/8490112/>

Price:	\$93,750 - \$143,325
Unit Size:	1,250 - 2,033 SF
No. Units:	5
Total Building Size:	29,828 SF
Property Type:	Office
Property Sub-type:	Medical
Sale Type:	Owner User
Building Class:	B
Floors:	2
Typical Floor Size:	14,914 SF
Year Built:	2008
Lot Size:	4.39 AC
Parking Ratio:	5.18/1,000 SF
Walk Score ®:	38 (Car-Dependent)





1400 SE Goldtree Dr, Port Saint Lucie, FL 34952