

MARKET PLACE BUSINESS CENTRE

3 AVAILABLE SPACES

MARKET PLACE CENTER IS LOCATED DIRECTLY ON MARKET PLACE FACING SUPER WALMART. THERE IS AN ABUNDANCE OF PARKING DESIGNATED FOR BUILDING 1 TO ACCOMMODATE A VARIETY OF USES INCLUDING RETAIL.



**Christenson
Commercial**
REAL ESTATE

759 S. FEDERAL HWY • SUITE 217 • STUART, FL 34994

Derrick Christenson

Licensed. RE Broker Associate

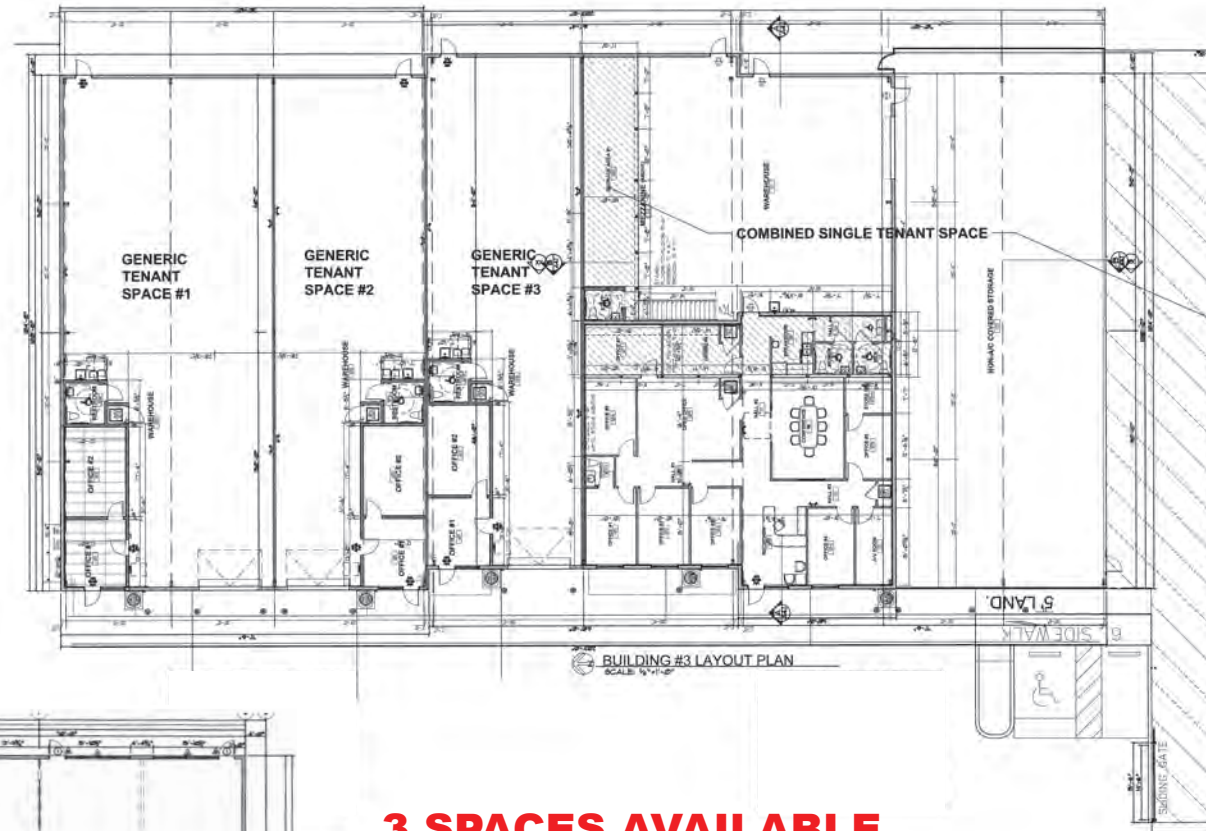
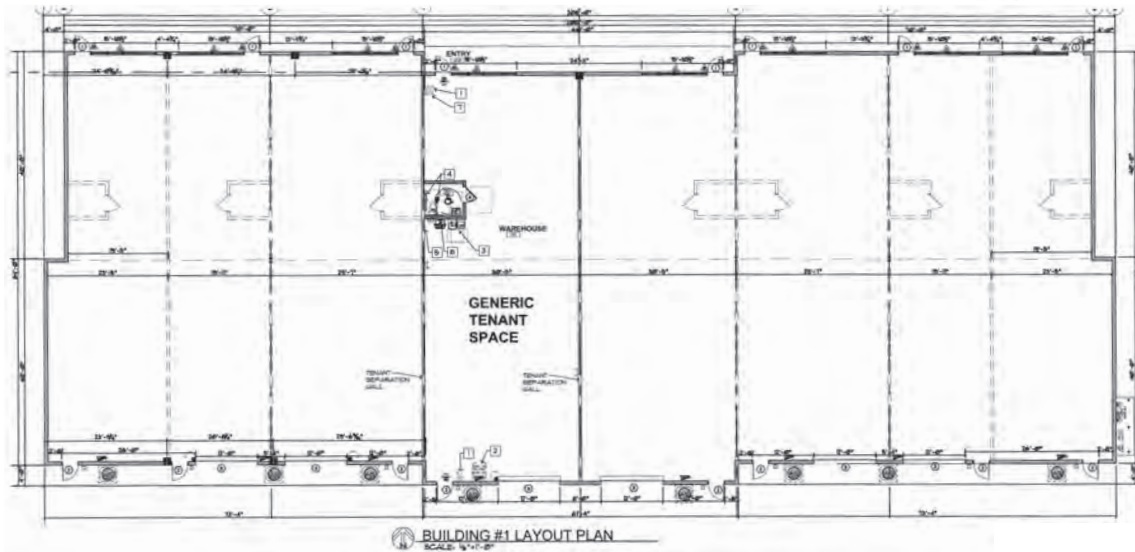
Derricksoldit@aol.com

+1.772.419.5076

+1.772.201.3154

MARKET PLACE CENTER

This Office/Warehouse/Showroom is under construction and scheduled to be completed in Nov. 2019. Features include 12X14 overhead doors, 3-phase electric, handicapped accessible bathrooms, Impact glass and assorted office build-outs for your specific business. Market Place Center is located directly on Market Place facing Super Walmart. There is an abundance of parking designated for Building 1 to accommodate a variety of uses including retail.



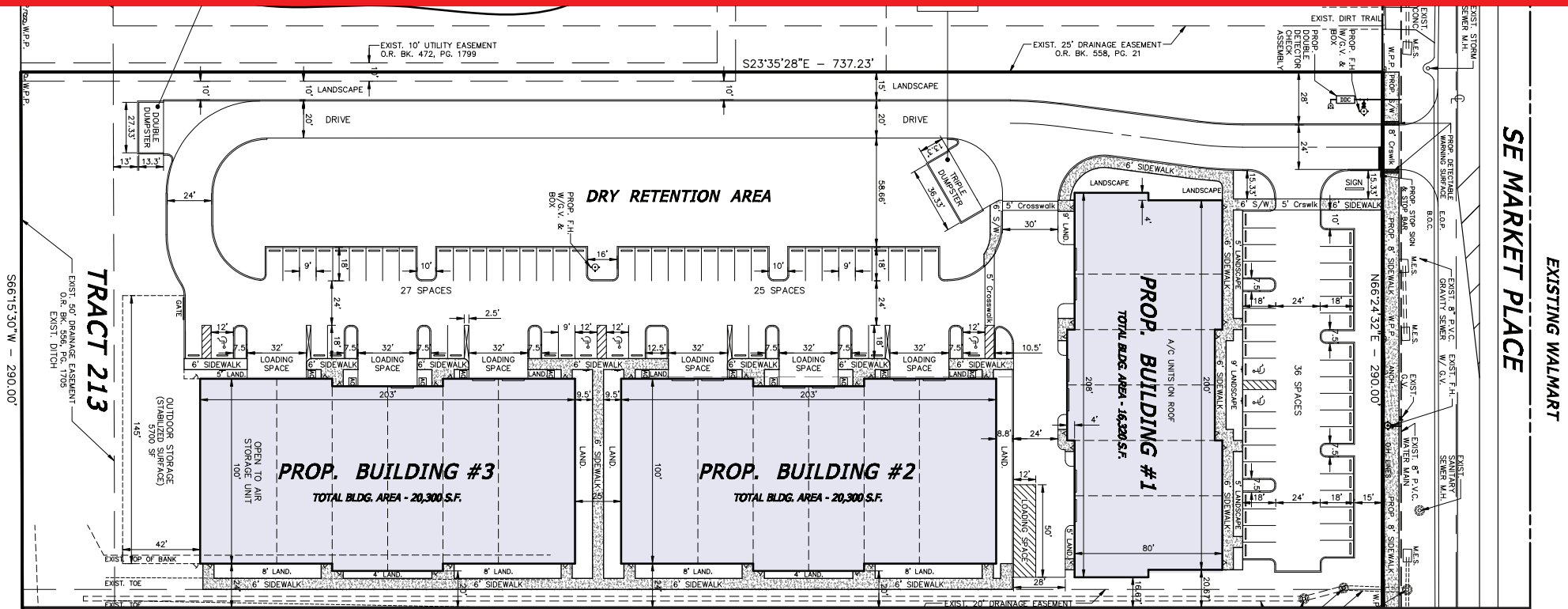
3 SPACES AVAILABLE

56,920 SQFT TOTAL SPACE

\$12.00 - \$14.00 /SF/YR

Don't miss this opportunity!

Pre leasing now 2,000/SF - 20,000/SF.



BUILDING 1

- SPACE AVAILABLE:** 16,320 SF
- RENTAL RATE:** \$14.00 /SF/YR
- LEASE TERM:** NEGOTIABLE
- DATE AVAILABLE:** NOVEMBER 01, 2019
- SPACE USE:** INDUSTRIAL
- SPACE TYPE:** NEW FLOOR / 1ST FLOOR

BUILDING 2

- SPACE AVAILABLE:** 20,300 SF
- RENTAL RATE:** \$12.00 /SF/YR
- LEASE TERM:** NEGOTIABLE
- DATE AVAILABLE:** NOVEMBER 01, 2019
- SPACE USE:** INDUSTRIAL
- SPACE TYPE:** NEW FLOOR / 1ST FLOOR

BUILDING 3

- SPACE AVAILABLE:** 20,300 SF
- RENTAL RATE:** \$12.00 /SF/YR
- LEASE TERM:** NEGOTIABLE
- DATE AVAILABLE:** NOVEMBER 01, 2019
- SPACE USE:** INDUSTRIAL
- SPACE TYPE:** NEW FLOOR / 1ST FLOOR

MARKET PLACE
BUSINESS CENTRE

Christenson
Commercial
REAL ESTATE

Derrick Christenson
Licensed. RE Broker Associate
Derricksoldit@aol.com
+1.772.419.5076
+1.772.201.3154



MARKET PLACE
BUSINESS CENTRE

Christenson
Commercial
REAL ESTATE

Derrick Christenson
Licensed. RE Broker Associate
Derricksoldit@aol.com
+1.772.419.5076
+1.772.201.3154