

MARKET PLACE BUSINESS CENTRE

2 AVAILABLE SPACES

MARKET PLACE CENTER IS LOCATED DIRECTLY ON MARKET PLACE FACING SUPER WALMART. THERE IS AN ABUNDANCE OF PARKING DESIGNATED FOR BUILDING 1 TO ACCOMMODATE A VARIETY OF USES INCLUDING RETAIL.



**Christenson
Commercial**
REAL ESTATE

759 S. FEDERAL HWY • SUITE 217 • STUART, FL 34994

Derrick Christenson

Licensed. RE Broker Associate

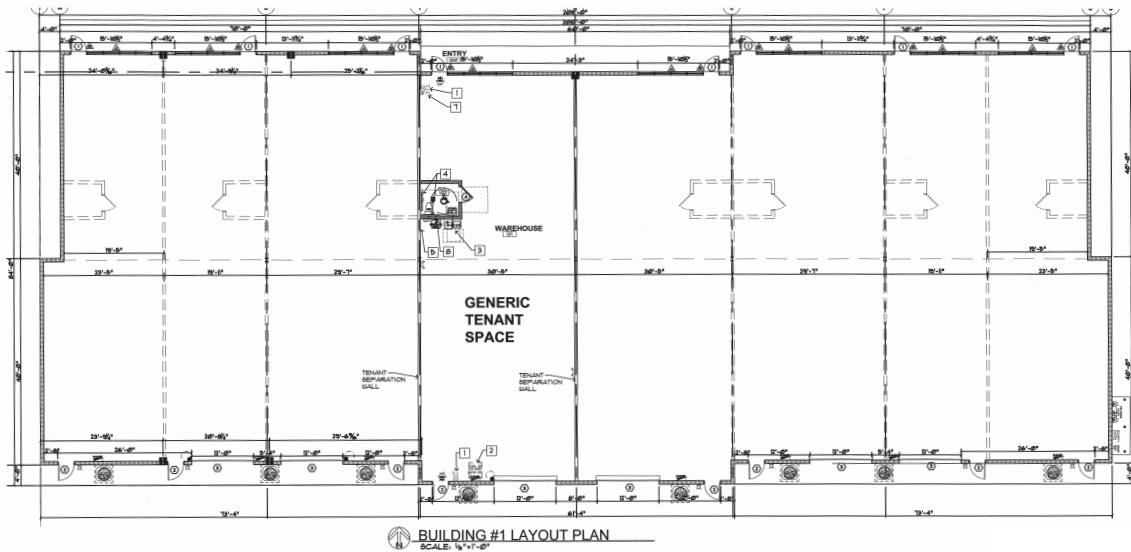
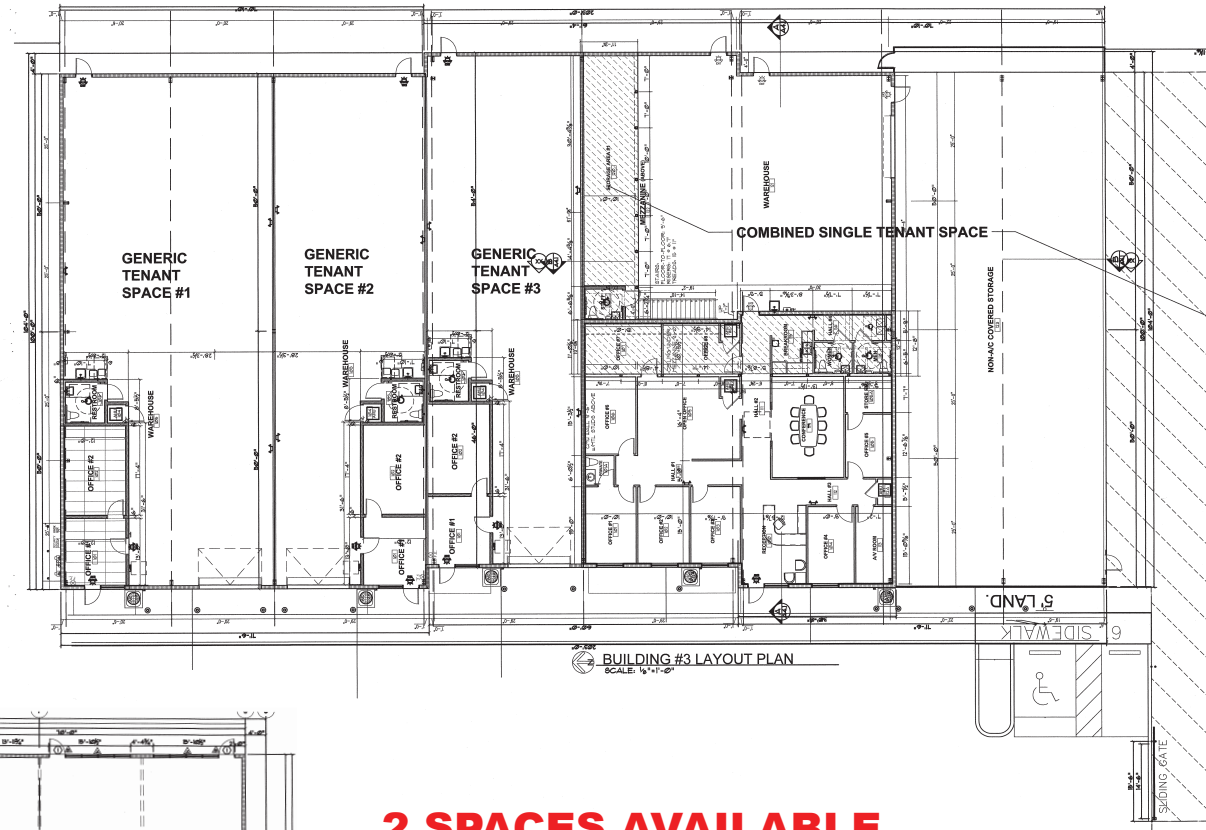
Derricksoldit@aol.com

+1.772.419.5076

+1.772.201.3154

MARKET PLACE CENTER

Features include 12X14 overhead doors, 3-phase electric, handicapped accessible bathrooms, Impact glass and assorted office build-outs for your specific business. Market Place Center is located directly on Market Place facing Super Walmart. There is an abundance of parking designated for Building 1 to accommodate a variety of uses including retail.



2 SPACES AVAILABLE
3,370 SQFT UNIT
10,576 SQFT UNIT
PRICE: NEGOTIABLE

Don't miss this opportunity!



MARKET PLACE
BUSINESS CENTRE

Christenson
Commercial
REAL ESTATE

Derrick Christenson
Licensed. RE Broker Associate
Derricksoldit@aol.com
+1.772.419.5076
+1.772.201.3154