

FOR LEASE

CITY COMMERCE CENTER



- ADDRESS:** 2120-2180 S.E. Rays Way; Stuart, FL 34994
- PROPERTY SIZE:** 2,000-12,000 SF
- ZONING:** Light Industrial
- LEASE AMOUNT:** \$10,000/Mth (Gross) for entire building...Individual units can be leased...call for further details.
- COMMENTS:** Building Features: 2008 tilt-wall construction; Highly insulated foam roof system, Impact glass, 20' ceiling clear height, 3-phase electric, High-bay fluorescent lighting, (5) 12x14 overhead doors throughout entire building.

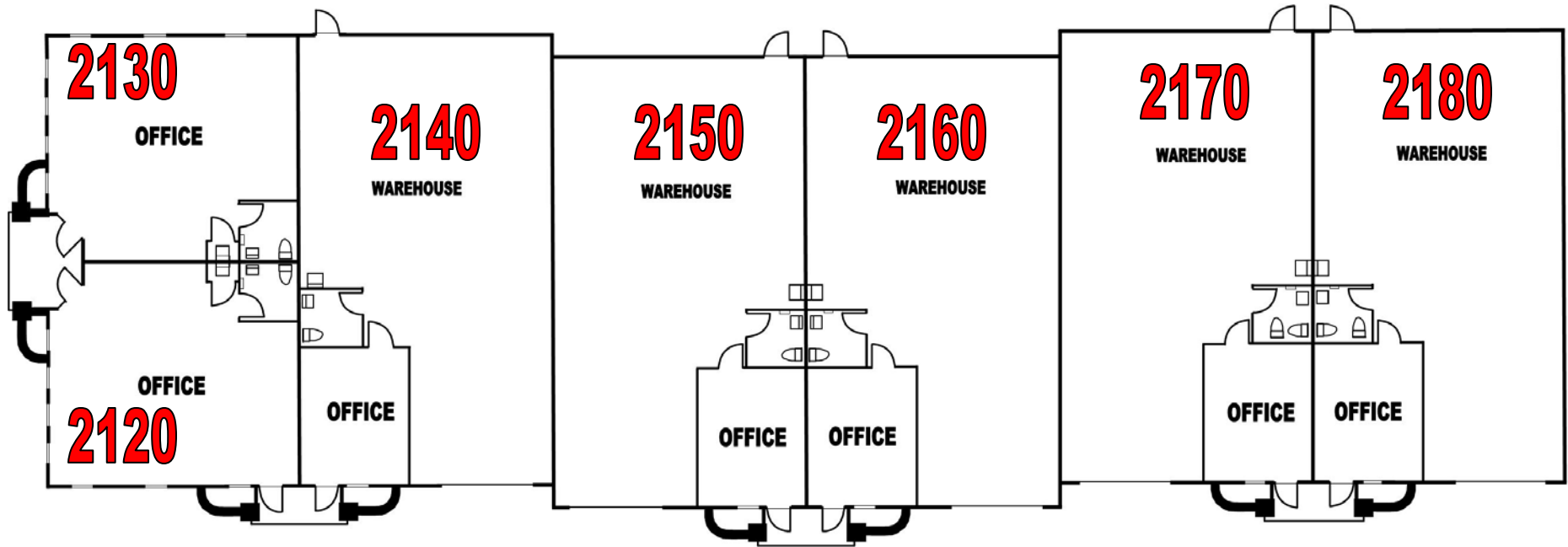
EXCLUSIVELY LISTED BY...

759 S. Federal Highway, Ste. 304
Stuart, Florida 34994
www.ChristensonCommercial.com

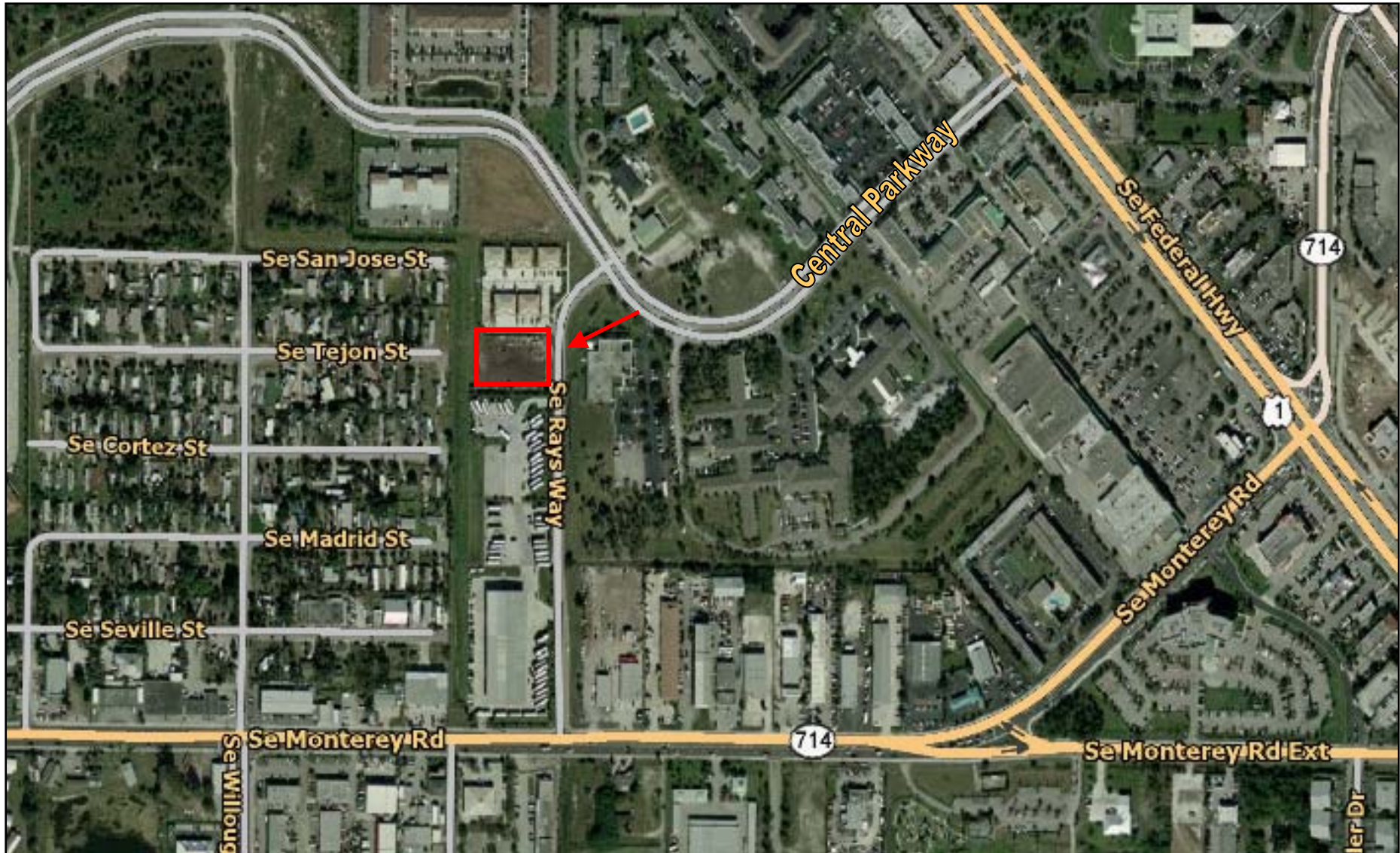
Christenson
Commercial
REAL ESTATE

For Additional Information Contact:
Derrick Christenson
(772) 201-3154
Derricksoldit@aol.com

The above information has been obtained from sources we consider reliable, but we do not guarantee it; submitted subject to errors, prior sale, withdrawal, or change in price or terms and conditions without notice.



CITY COMMERCE CENTER



**2120-2180 S.E. RAYS WAY
STUART, FL 34994**